

As promised!

UGIMA® 4404 HM / UGIMA® 316L XL

C 0.030 max • Cr 16.5-17.5 • Ni 11-12 • Mo 2.0-2.5

Complies with standards

EN 10088-3 : 1.4404 et 1.4401 X2CrNiMo 17-12-2 - AISI 316L et 316 - JIS SUS 316

- A new grade for the UGIMA®2 family
- Machining performance and flexibility combined with corrosion resistance!
- UGIMA® 4404 is already a benchmark, UGIMA® 4404HM is a new technological advance.
- Optimised machinability, whatever the operation and whatever the machine used.
 - Improved chip breakability,
 - Productivity increases of 10 to 20% over UGIMA® 4404

UGITECH

remains at the cutting edge of machinability.

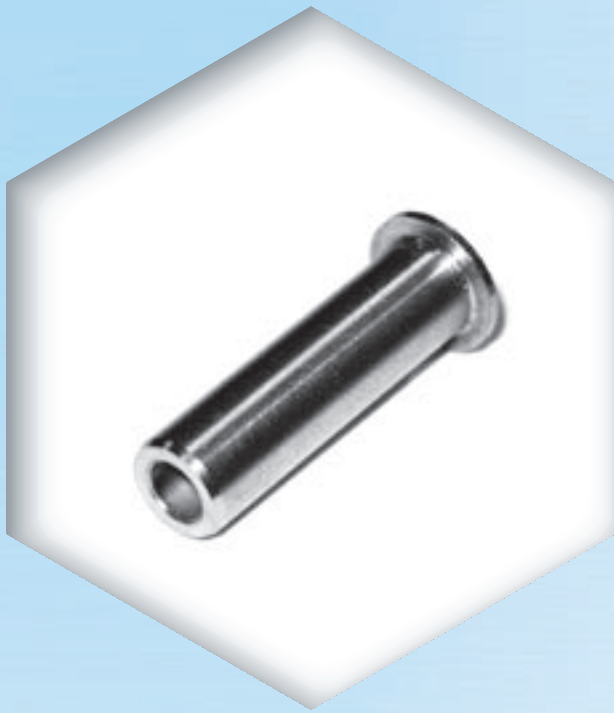
We shall continue to develop UGIMA®2

For all grades designed for machining purposes!

UGITECH

Providing special steel solutions





Productivity increase calculation method

Diameter (mm)	10
Component length (mm)	30
Material weight (kg/m)	0,617
Material weight per component (g)	18
Hourly machine cost (€/hr)	30
No. of components per production run	100 000

	UGIMA® 4404	UGIMA® 4404HM
Productivity* (components per production run)	117,5	137,5
Machining cost (€/component)	0,26	0,22

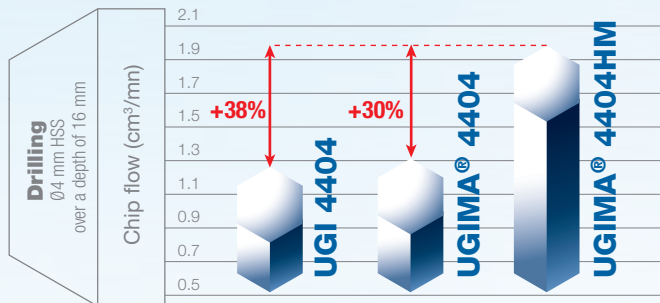
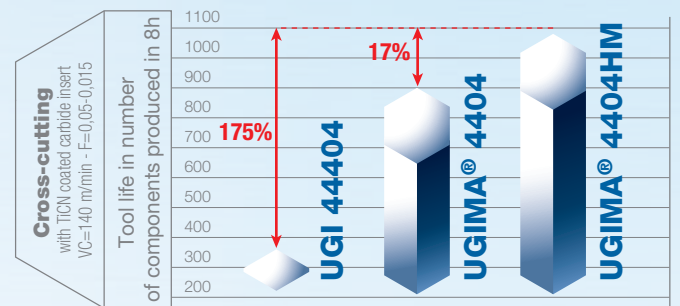
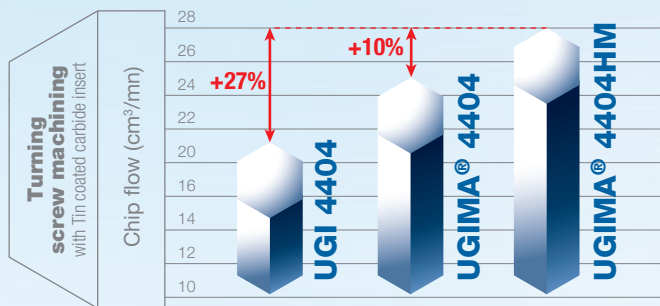
Machining increase per component (€)	0,04**
Production run increase (€)	4000
Material cost per component (€)	0,04**

*with 83% efficiency

**Nota Bene : In this example, the machining increase is equivalent to the material cost

UGIMA® 4404 HM UGIMA® 316L XL

For a production run of 100,000 components of the type illustrated above, the productivity increases obtained result in a saving of 0.04 € per component, i.e. a total of 4000 €.



UGITECH

Avenue Paul Girod
73403 UGINE Cedex
FRANCE
Tel. +33 (0)4 79 89 30 30
Fax: +33 (0)4 79 89 34 34

www.ugitech.com

